



# Excibur

**EXCALIBUR** offer high quality access cover solutions in a range of materials, sizes and formats to suit your project requirements.

Established in 2007. Our highly experienced management, staff and technicians were able to quickly establish a high quality reputation in the market by meeting their clients' specific requirements and illustrating that their products met the challenges of handling the harsh environment of the region at a competitive cost.

**EXCALIBUR** access covers come with a two year warranty. All products are designed to meet or exceed the relevant international standards and specifications.

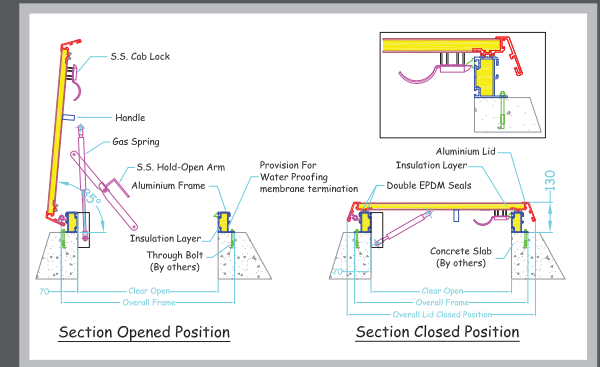
**EXCALIBUR** offer many different standard models of access covers and ladders, most of which can be modified to meet your specific requirements.

Our goal is to be recognized as the sole specialized establishment for regionally designed and fabricated lift assisted access covers and to grow our excellent reputation by meeting your highest expectations.

# Excalibur EXR Model

## Roof Type Lift Assisted Access Cover

Made to any Size  
All hardware is S.S. 316



### Standard Specification

External type access cover. Gas Spring operated, manufactured in Aluminium or Stainless Steel to Pedestrian load class. Both lid & frame are sandwich type with insulation layer to minimise weather effect. Lid and frame incorporate with specially designed heavy hinges. Lid incorporates two EPDM mechanically fixed continuous rubber seals for weather tightness.



### Optional Specification

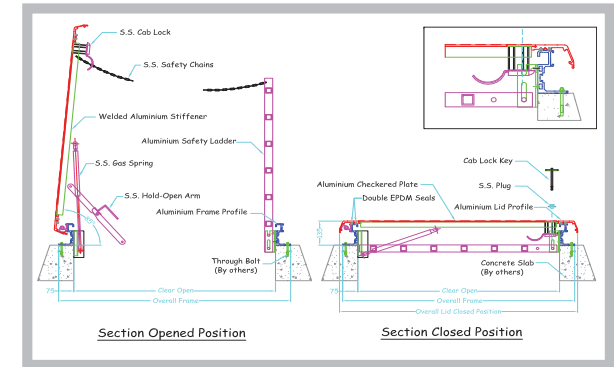
- Polyester powder coating to standard RAL colours.
- S.S. Grade 316L Gas Springs.
- Various locking & opening devices.
- Various frame heights.
- Safety grills and chains.
- Retractable ladder extension.
- Curb encasement skirting.
- Wind restraining chains.
- Electrical/Battery operation.
- Security Sensors.
- Glazed/Skylight Lid.
- Smoke/Fire Vent system.
- Fire Rating.





# Excalibur EXU Model

## Up-Stand Type Lift Assisted Access Cover



Made to any Size  
All hardware is S.S. 316

### Standard Specification

Industrial external type access cover. Gas Spring operated, manufactured in Aluminium or Stainless Steel to various load classes.

Available as single lid or multiple lids with fixed or removable intermediate beams.

Lid and frame are incorporate with specially designed heavy hinges.

Lid incorporates two EPDM mechanically fixed continuous rubber seals.

Custom made designs to suit site conditions & requirements.

### Optional Specification

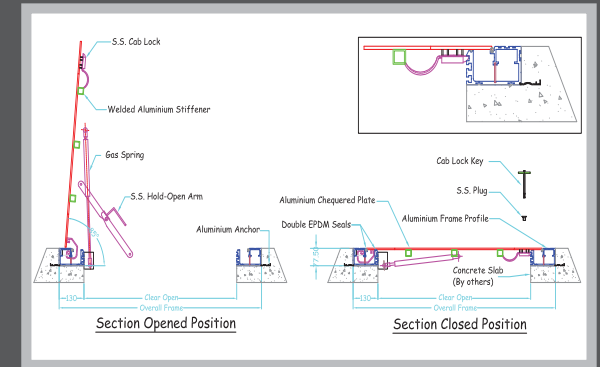
- Polyester or epoxy powder coating to standard RAL colours.
- Safety grill & chains.
- S.S. Grade 316L Gas Springs.
- Various locking & opening devices.
- Various load classes.
- Retractable ladder extension.
- Wind restraining chains.
- Electrical/Battery operation.
- Security Sensors.
- Glazed/Skylight lids.
- Fire Rating.



# Excalibur EXF Model

## Flushed Type Lift Assisted Access Cover

Made to any Size  
All hardware is S.S. 316



### Standard Specification

External/Internal type access cover, Gas Spring operated, manufactured in Aluminium or Stainless Steel to various load classes.

Available as single or multiple lids with fixed intermediate beams.

Lid and frame incorporate with specially designed heavy hinges.

Frame incorporates two EPDM mechanically fixed continuous rubber seals.



### Optional Specification

- Polyester or epoxy powder coating to standard RAL colours.
- Safety grill & chains.
- S.S. Grade 316L Gas Springs.
- Various locking & opening devices.
- Various load classes.
- Retractable ladder extension.
- Wind restraining chains.
- Electrical/Battery operation.
- Security Sensors.
- Fire Rating.

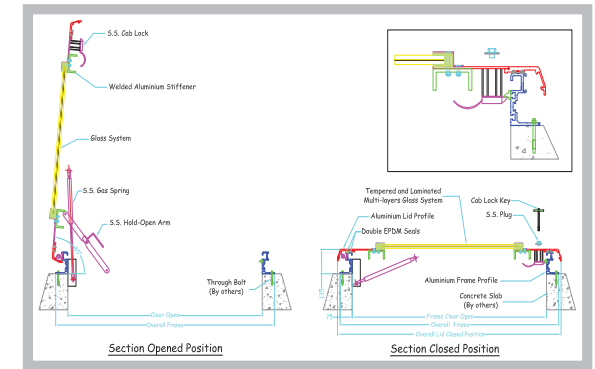




# Excalibur EXU-SL Model

## Glazed/Skylight Lift Assisted Access Cover

Made to any Size  
All hardware is S.S. 316



### Standard Specification

External glazed-type access cover, Gas Spring operated, manufactured in Aluminium or Stainless Steel to various load classes. Available as single or multiple-lids with fixed intermediate beams. Lid and frame incorporate with a specially designed heavy hinges. Lid incorporates two EPDM mechanically fixed continuous rubber seals. All glazed systems incorporates tempered glass.

### Optional Specification

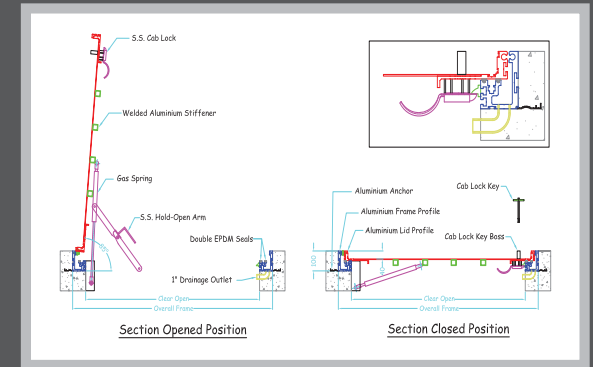
- Polyester powder coating to standard RAL colours.
- Various types of glazing systems.
- Glass colour tinting to your choice.
- S.S. Grade 316L Gas Springs.
- Various locking & opening devices.
- Various load classes.
- Retractable ladder extension.
- Wind restraining chains.
- Electrical/Battery operation.
- Security Sensors.



# Excalibur EXTH Model

## Recessed Hinged Type Lift Assisted Access Cover

Made to any Size  
All hardware is S.S. 316



### Standard Specification

External/Internal recessed type access cover, Gas Spring operated, manufactured in Aluminium or Stainless Steel to various load classes. Available as single recessed lid with infill depth between 1 mm to 40 mm. Lid and frame incorporate with specially designed heavy hinges. Frame incorporates two EPDM mechanically fixed continuous rubber seals.



### Optional Specification

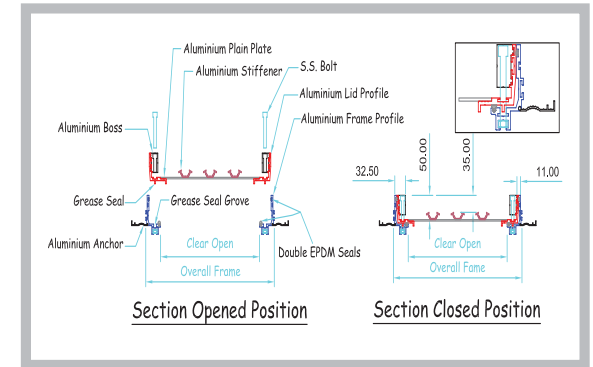
- Polyester powder coating to standard RAL colours.
- Safety grill & chains.
- S.S. Grade 316L Gas Springs.
- Various locking & opening devices.
- Various load classes.
- Retractable ladder extension.
- Wind restraining chains.
- Electrical/Battery operation.
- Security Sensors.
- Fire Rating.



# Excalibur EXT-D Model

## Recessed Drop-In Type Access Cover

Made to any Size  
All hardware is S.S. 316

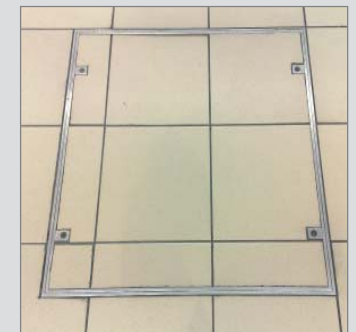
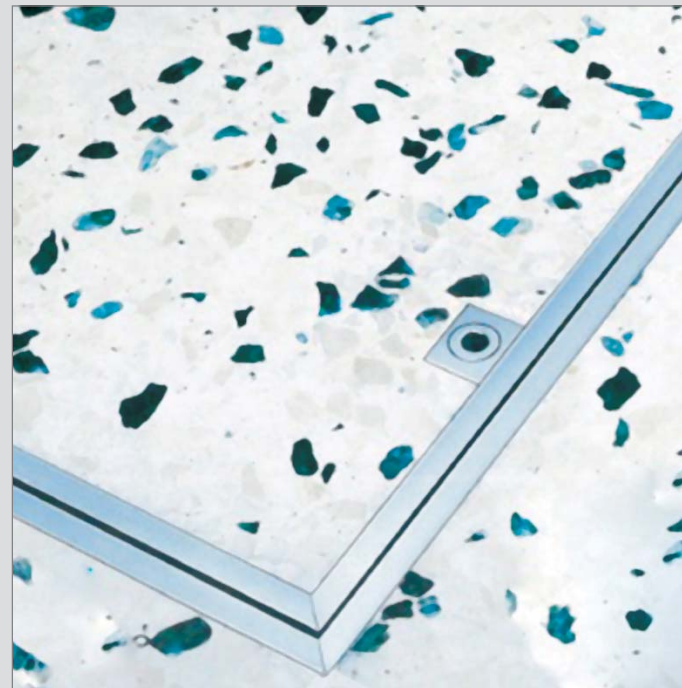


### Standard Specification

External/Internal recessed type access cover, manufactured in Aluminium or Stainless Steel to various load classes. Available as single or multiple lids with Infill depth between 1 mm to 100 mm. Frame incorporates two EPDM mechanically fixed continuous rubber seals.

### Optional Specification

- Polyester powder coating to standard RAL colours.
- Brass top rims (minimum order quantity is required).

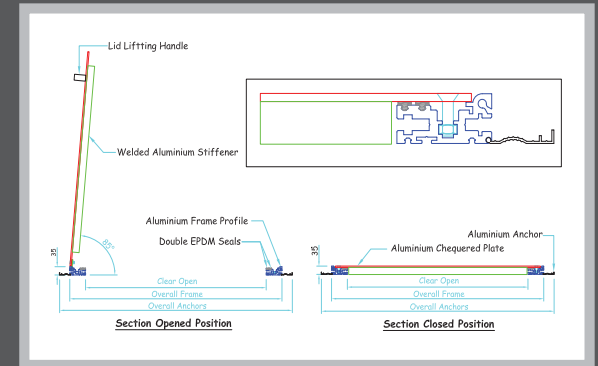




# Excalibur EXDH Model

## Chequered Plate Hinged Type Access Cover

Made to any Size  
All hardware is S.S. 316



### Standard Specification

External/Internal hinged chequered plate type access cover, manufactured in Aluminium or Stainless Steel to pedestrian load class.  
Available as single or multiple lids with fixed intermediate beams.  
Lid and frame incorporate with a specially designed heavy hinges.  
Frame incorporates two EPDM mechanically fixed continuous rubber seals.



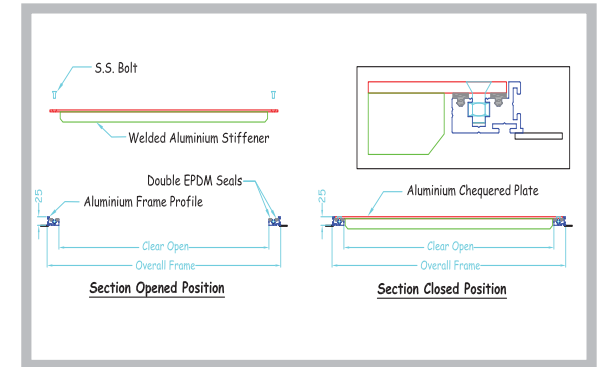
### Optional Specification

- Polyester powder coating to standard RAL colours.
- Various locking & opening devices.
- Various Load Classes.
- Wind restraining chains.
- Gas Spring operation.



# Excalibur EXD Model

## Chequered Plate Drop-in Type Access Cover



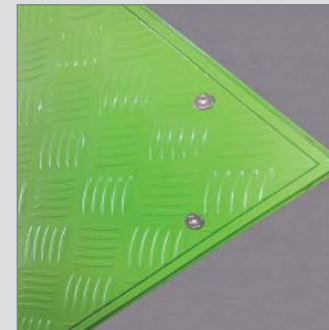
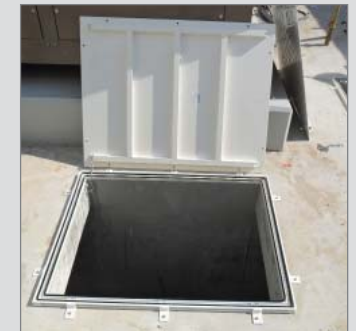
Made to any Size  
All hardware is S.S. 316

### Standard Specification

External/Internal drop in chequered plate type access cover, manufactured in Aluminium or Stainless Steel to pedestrian load class.  
Available single lid as a manhole cover & frame or in multiple lids as a duct channel cover and frame.  
Frame incorporates two EPDM mechanically fixed continuous rubber seals.

### Optional Specification

- Polyester powder coating to standard RAL colours.
- Various locking & opening devices.
- Various Load Classes.
- Custom made designs to suit site conditions & requirements.



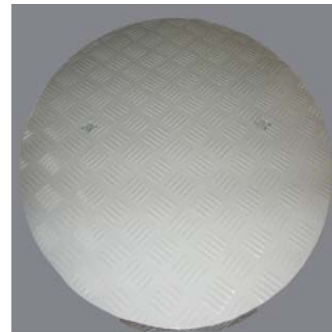
# Excalibur EXS Model

## Special Models Access Covers

Made to any Size

### Standard Specification

Custom made access covers & gratings to suit site special requirements, in various Load Classes, Shapes, Types and Fixing options. Manufactured in Aluminium or Stainless Steel in single or multiple lids.



### Optional Specification

- Polyester powder coating to standard RAL colours.
- Anodising.
- Galvanizing.
- Epoxy Painting.





# Excalibur EXCP Model

## Ceiling Access Panel

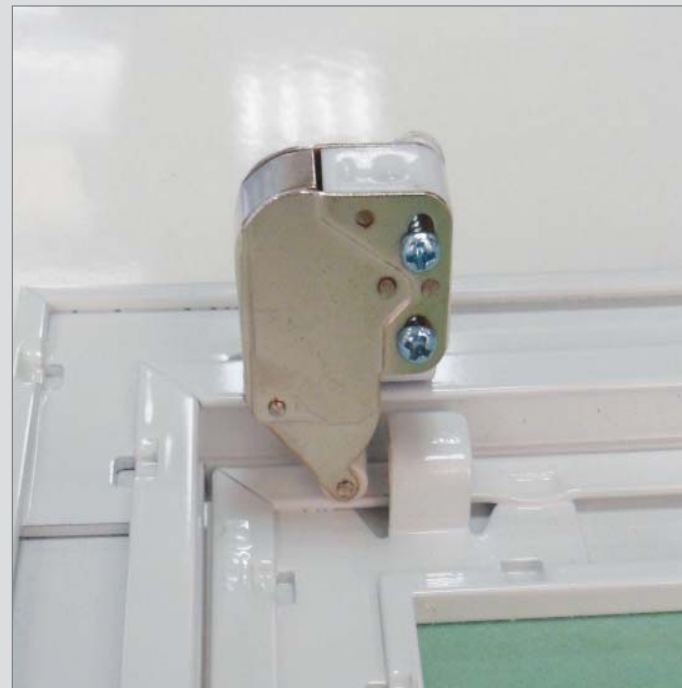
Made to any Size

### Standard Specification

Internal hinged-type ceiling access panel manufactured in Aluminium with recessed lid for gypsum board infill.

### Optional Specification

- Polyester powder coating to standard RAL colours.
- Fire/Moisture resistant gypsum boards.
- Sodium Silicate boards.



# Excalibur EXWP Model

## Wall Access Panel

Made to any Size

### Standard Specification

Internal/External wall-type access panel manufactured in Aluminium or Stainless Steel with solid or recessed doors suitable for gypsum boards, sodium silicate boards, plaster or ceramic tiles.

### Optional Specification

- Polyester powder coating to standard RAL colours.
- Various locking & opening devices.
- Fire Rating.



# Excalibur EXG Model Gratings

Made to any Size  
All hardware is S.S. 316

## Standard Specification

External/Internal mesh, slotted or perforated type access grating, manufactured in Aluminium or Stainless Steel to various load classes and opening. Available with or without frame and in single or multi parts.

## Optional Specification

- Polyester powder coating to standard RAL colours.
- Anodising.
- Angle frame.
- Various locking and opening options.
- Hinging.
- Serrated finish.
- Gas spring operation.



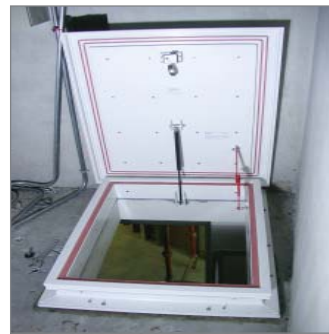


# Excalibur FR

Fire Rated

Made to any Size  
All hardware is S.S. 316

The following models can be supplied fire rated  
up to 3 hours.  
EXR, EXU, EXF, EXTH, and EXWP.



# Excalibur EXL Model

## Cat Ladder

Made to any Size  
All hardware is S.S. 316

### Standard Specification

External/Internal vertical ladder, manufactured in Aluminium and Stainless Steel.

### Optional Specification

- Polyester powder coating to standard RAL colours.
- Anodising.
- Wall or floor mounting.
- Safety cages.
- Retractable handles.



# Excalibur EXLZ & EXLF Models

Zip & Foldable ladder

## Standard Specification

Zip & Foldable ladders manufactured in Aluminium or Steel to suit various ceiling heights.

## Optional Specification

- Polyester powder coating to standard RAL colours.
- Anodising.
- Galvanizing.
- Side handrail.
- Ceiling access panel.
- Various loads.



\* Minimum order quantity is required.



# Excalibur EXHR Model Handrail System

Made to any Size  
All hardware is S.S. 316

## Standard Specification

Aluminium alloy marine grade slip-on double ball handrail system .  
Stainless Steel welded type handrail.



## Optional Specification

- Polyester powder coating to standard RAL colours.
- Anodising.
- Polishing.
- Kick plate.
- Site measurement and installation.



# Excalibur Platforms

## Platforms

Made to any Size

### Standard Specification

Platforms are designed to suit your specification and fabricated as per your site requirements.



### Optional Specification

- Polyester powder coating to standard RAL colours.
- Anodising.
- Galvanising.
- Site measurement and installation.



# Optional Features

## Colours Options:

- Powder coating with one of the standard RAL colours is free of charge.
- Other RAL colours can be supplied with a minimum extra charge.



\*RAL 9016 (White)



\*RAL 9005 (Black)



\*RAL 6018 (Green)



\*RAL 5009 (Blue)



\*RAL 3020 (Red)



\*RAL 7038 (Grey)

## Opening/Closing options:



Cab Lock



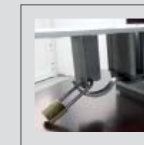
1/4 Turn Cam Lock



1/4 Turn Cam Lock With Key



Top Open Handle



Internal Pad Lock Provision



External Pad Lock Provision

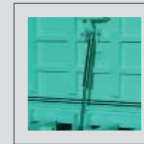
## Operation & Special Security Options:



"T" Key



"T" Threaded key



Gas Spring



Electrical/Battery Actuator

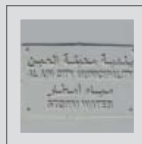


Micro Switch Sensor  
(To be connected to  
\*\*BMS, \*\*\*FAS)



Electro Magnetic Lock  
(To be connected to  
\*\*BMS, \*\*\*FAS)

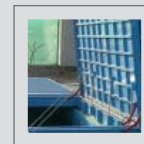
## Other Options:



Badging



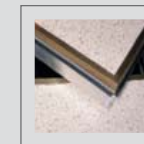
Safety Grill & Chains



Wind Restraining Chains



Drain Outlet



Brass Rim (EXTD)



Retractable Handle

\* Colours are indicative

\*\* Building Management System

\*\*\* Fire Alarm System



# Quality Control Quality Assurance

## In-House Inspection - Third Party Testing - ISO Certification.

**Check List # 1**

**Incoming Raw Material & Components Inspection Check List**

Material	1	2	3	4	5	6	7	8	9	10
Type	<input type="checkbox"/>	<input type="checkbox"/>	<input type="checkbox"/>	<input type="checkbox"/>	<input type="checkbox"/>	<input type="checkbox"/>	<input type="checkbox"/>	<input type="checkbox"/>	<input type="checkbox"/>	<input type="checkbox"/>
Code	<input type="checkbox"/>	<input type="checkbox"/>	<input type="checkbox"/>	<input type="checkbox"/>	<input type="checkbox"/>	<input type="checkbox"/>	<input type="checkbox"/>	<input type="checkbox"/>	<input type="checkbox"/>	<input type="checkbox"/>
Thickness	<input type="checkbox"/>	<input type="checkbox"/>	<input type="checkbox"/>	<input type="checkbox"/>	<input type="checkbox"/>	<input type="checkbox"/>	<input type="checkbox"/>	<input type="checkbox"/>	<input type="checkbox"/>	<input type="checkbox"/>
Edg. r	<input type="checkbox"/>	<input type="checkbox"/>	<input type="checkbox"/>	<input type="checkbox"/>	<input type="checkbox"/>	<input type="checkbox"/>	<input type="checkbox"/>	<input type="checkbox"/>	<input type="checkbox"/>	<input type="checkbox"/>

Inspected By: \_\_\_\_\_

Approved By: \_\_\_\_\_

Date: \_\_\_\_\_

**Check List # 5**

**Covers & Frames Pre Coating Finished Product Inspection Check List**

**I Job Details**

1.1 FIC No.: \_\_\_\_\_

1.2 Contract File No.: \_\_\_\_\_

1.3 FIC Starting Date: \_\_\_\_\_

1.4 FIC Inspection Date: \_\_\_\_\_

1.5 Job Description: New Fabrication Maintenance & Repair

1.6 Inspected Cover Type: \_\_\_\_\_

1.7 FIC Product Details:

Item	Product	Product Serial No.	Product C/O	Qty	Multi-Use Qty	Comments
A						
B						
C						
D						
E						
F						
G						
H						
I						
J						
K						
L						
M						
N						
O						

**II Frame Inspection**

2.1 Clear Open:  OK  Not OK  N/A

2.2 Corners Joint Quality:  OK  Not OK  N/A

2.3 Corners Joint Gap:  OK  Not OK  N/A

2.4 Corners Welding Quality:  OK  Not OK  N/A

2.5 Corners Welding Location:  OK  Not OK  N/A

2.6 Dents or Scratches:  OK  Not OK  N/A

2.7 Sharp Edges:  OK  Not OK  N/A

2.8 Foundation Holes Qty:  OK  Not OK  N/A

2.9 Foundation Holes Location:  OK  Not OK  N/A

2.10 Foundation Holes Size:  OK  Not OK  N/A

2.11 Vertical Angles Corners Outside:  OK  Not OK  N/A

2.12 Vertical Angles Corners Inside:  OK  Not OK  N/A

2.13 Vertical Angles Corners Middle:  OK  Not OK  N/A

2.14 General Visual Status:  OK  Not OK  N/A

**Check List # 10**

**Covers & Frames Pre-Delivery Final Product Inspection Check List**

**I Job Details**

1.1 FIC No.: \_\_\_\_\_

1.2 Contract File No.: \_\_\_\_\_

1.3 FIC Starting Date: \_\_\_\_\_

1.4 FIC Inspection Date: \_\_\_\_\_

1.5 Job Description: New Fabrication Maintenance & Repair

1.6 Inspected Cover Type: \_\_\_\_\_

1.7 FIC Product Details:

Item	Product	Product Serial No.	Clear Open	Qty	Multi-Use Qty	Comments
A						
B						
C						
D						
E						
F						
G						
H						
I						
J						
K						
L						
M						
N						
O						

**II Frame Inspection**

3.1 Corners Joint Quality:  OK  Not OK  N/A

3.2 Corners Le Seals/Seals:  OK  Not OK  N/A

3.3 Sharp Edges:  OK  Not OK  N/A

3.4 Seals/Seals Status:  OK  Not OK  N/A

3.5 Seals/Seals Qty:  OK  Not OK  N/A

3.6 Seals/Seals Thickness:  OK  Not OK  N/A

3.7 General Visual Status:  OK  Not OK  N/A



**Certificate of Registration**

Awarded to

**NEW WORKSHOP ALUMINIUM & STEEL WORKS**

at

P.O. BOX NO: 112016, PLOT NO: 22, M32/2, MUSAFFAH INDUSTRIAL AREA, ABU DHABI, UAE

Quality Registrar Systems certify that the management system of the above organization has been audited and found to be in compliance with the QRS requirements for registration of the management system standard detailed below:

**ISO 9001:2008**

Scope of work

DESIGN & FABRICATION OF:

- ACCESS COVERS AND FRAMES
- ALUMINIUM INDUSTRIAL PRODUCTS
- STAINLESS STEEL INDUSTRIAL PRODUCTS
- STEEL INDUSTRIAL PRODUCTS

Certificate No: AQJ-10290

Originally Registered: 10 MAR 2018

Latest Issue: 09 MAR 2018

Valid up to: 09 MAR 2015

Quality Registrar Systems

REGISTERED OFFICE: 41 Ferns Place, Elmwoodville, Dorset, BBS 041, United Kingdom. www.qrsq.com

MAIN OFFICE: Quality Registrar Systems, Tel: +971 2 671 4302, Fax: +971 2 671 4499, www.qrsq.com

WORLD WIDE CERTIFICATION

This is an accredited certificate awarded for issue by Accreditation Service for Continuing Bodies (ASCB) Limited who have assessed QRS in compliance with the requirements of ISO 17021:2011 (Quality Management Systems - Requirements for bodies providing audit and certification of management systems). This certificate is only valid when confirmed by the register listed in the International Register of Quality Assurance Organizations (IRIS).

# FACTA









## Loading Classification Table

Fabricated access covers complying with the requirements of this specification shall be graded as follows:

NOTE : Under the "Road Vehicles (Authorised Weight) Regulations 1998", axle weights for the UK are limited to 11.5 tonnes maximum. (Refer to Acceptance Test for maximum design load/load bearing capacity).

\*Slow moving wheel loads are deemed to be speeds no greater than 20mph.

\*\*These Comparisons are for guidance only and not intended to be exact.

	Comparison **	Wheel Loads		Load Test Data	
FACTA Class	EN124 Class	Wheel Loads * (slow moving) Pneumatic	Wheel Loads * (slow moving) Solid	Test 1 (Service) (Static Wheel Load plus overload & dynamic effects)	Test 2 (Ultimate) (Test 1 load plus ultimate safety factor)
	A15	0.6 tonne (5kN)	N/A	5.0 x 1.0 x 1.0 = 5.0kN	5.0 x 1.6 = 8.0kN
	N/A	1.5 tonne (15kN)	N/A	15.0 x 1.1 x 1.15 = 19.0kN	19.0 x 1.6 = 31.0kN
	N/A	2.5 tonne (25kN)	0.5 tonne	25.0 x 1.1 x 1.15 = 32.0kN	32.0 x 1.6 = 52.0kN
	B125	5.0 tonne (50kN)	0.75 tonne	50.0 x 1.1 x 1.15 = 63.25kN	63.25 x 1.6 = 101.0kN
	C250	6.5 tonne (65kN)	1.0 tonne	65.0 x 1.1 x 1.15 = 82.5kN	82.5 x 1.6 = 132.0kN
	D400	11.0 tonne (108kN)	3.0 tonne	108.0 x 1.1 x 1.15 = 137.5kN	137.5 x 1.6 = 220.0kN
	E600	16.0 tonne (158kN)	5.0 tonne	158.0 x 1.1 x 1.15 = 200.0kN	200.0 x 1.6 = 320.0kN
	F900	24.0 tonne (237kN)	N/A	237.0 x 1.1 x 1.15 = 300.0kN	300.0 x 1.6 = 480.0kN

# Major Project List

Sr.No.	Project Name	Client	Consultant	Contractor
1	Masdar Institute of Science	Masdar City	Foster & Partners.	A.C.C.
2	Presidential Palace	Private Department	Parsons International LTD.	Al Jurf
3	Crown Prince Court	Crown Prince Department	Dorsch Gruppe	Al Ryum
4	Dubai World Center Int. Airport	Department of Civil Aviation	Dar Al Handasah	Tristar
5	Presidential Flight State Guest Reception Terminal	Presidential Flight	Hochtief-Abu Dhabi	Six Construct
6	ADNOC Head Office Building	ADNOC	Hill International	Six Construct.
7	Ruwais Housing Complex expansion Phase 3	ADNOC	Various	Various
8	ADNOC Distribution	ADNOC	Various	Various
9	Upgrading Salam Street	Abu Dhabi Municipality	Parsons International LTD.	Samsung
10	H.H. Sk. Zayed Mosque	Abu Dhabi Municipality	Parsons International LTD.	Al Jurf
11	Yas Island Racing Track	Aldar	Tilka	KAR-FTA W.L.L.
12	Ferrari	Aldar	Jack Rouse Associates	Depa
13	Metro Dubai, Tabreed Cooling MD-01, MD-03, MD-04, MD-05 & MD-06	Tabreed	Adnan Safarini	SNC Lavalin Gulf Contractor
14	Strategic Water Storage/Recovery Project in Liwa	TRANSCO	A.C.C.	Dornier Consult
15	Khalifa Port & Kzad Area	ADPC	AWW / ATKINS / TEBODIN	Ghantoot Group
16	Mahwi Camp Contract MW - OU - 272 - 2009	U.A.E. Armed Forces	U.A.E. Armed Forces	Combined Group Co.
17	Emarati Housing Community Yas Island Phase 1	Aldar	Professional Arabian Consult.	Various
18	Raha Beach Phase 1	Aldar	Dorsch Gruppe-Aecom	Belhasa Projects
19	Sadiyat Beach Villas	TDIC	White - Young	Al Jaber Est.
20	Shams Abu Dhabi	Sorouh	Hill International	Al Geemi & A.C.C.
21	O. & M. Contracts 1 & 2 Al Ain	Al Ain Municipality	Diwi Consult	Nael Energy
22	Al Forsan Club, Abu Dhabi	Private Department	W. S. Atkins	Fibrex
23	Al Reef 2400 Villa Project	Manazel Property	Dar Al Handasah	Fibrex
24	Highland Resort Villas	Midmac Property	W. S. Atkins	National Projects & Construction
25	Qasr Al Sarab	TDIC	Dubarch	ALEC
26	Bawadi Mall	Nael Investment	Shankland Cox	Nael & Bin Harmal
27	Mirdif City Center	MAF	Holford Associates	ALEC
28	Golf Gardens villa complex	Residential Committee	Otak	Pivot
29	Al Salamat S100	Residential Committee	Dorsch Gruppe	Ghantoot Group
30	Contracts O - 1044, O-1191, O-1696, & Raha Beach	ADSSC	Various	Various
31	Contract O & M 101, 906, 383, 480,	PRFD	Various	Various
32	Najmat Reem Island	Reem Developers	Hyder Consulting	National Projects & Construction
33	Sea Palace Development	Private Department	Al Turath Consultant	National Projects & Construction
34	Majlis Hotel & Guest House (Qatar)	Private Engineering Office	ECG	UrbaCon General Contracting

Manufactured by  
New Workshop Aluminium  
& Steel Works



P.O. Box: 112016, Abu Dhabi, U.A.E

Tel: +971 (0) 2 55 11 598

Fax: +971 (0) 2 55 11 981

E-mail: [alaaddin@excaliburcovers.com](mailto:alaaddin@excaliburcovers.com)